

MADE IN  
GERMANY



**HOESCH**  
BATHS

HOESCH IS A NAME UNIVERSALLY RECOGNISED FOR SUPERIOR DESIGN AND QUALITY IN BATHS. FOR OVER 250 YEARS HOESCH HAS BEEN COMMITTED TO CREATING THE ULTIMATE BATH FOR THE ULTIMATE BATHING EXPERIENCE. TODAY, IT IS THE WORLD LEADER IN ACRYLIC MANUFACTURE, DEVELOPING ITS OWN, UNIQUE ACRYLIC MATERIALS AND PRODUCTION PROCESSES TO CREATE TRULY ORIGINAL SHAPES AND DESIGNS THAT CANNOT BE REPLICATED BY OTHERS. SIMPLY, A HOESCH BATH LOOKS DIFFERENT BECAUSE IT IS MADE DIFFERENT.

HOESCH TAKES A UNIQUE, ARCHITECTURAL APPROACH, BELIEVING A GREAT BATH, LIKE ANY GREAT BUILDING, REQUIRES A HARMONY OF CREATIVITY, ENGINEERING AND CONSTRUCTION TO ENSURE IT REMAINS ORIGINAL AND RELEVANT FOR A LIFETIME. HOESCH COMBINES THE RIGOUR AND PRECISION OF GERMAN ENGINEERING, THE INDIVIDUAL EXPRESSIONS OF INTERNATIONAL DESIGNERS AND RELENTLESS INNOVATION IN SHAPES AND MATERIALS TO CREATE BATHS THAT ARE IN FORM AND FUNCTION, DEFINITELY SUPERIOR, QUITE POSSIBLY, PERFECT.



**Reece Product Quality Guarantee**

Hoesch Baths enjoy a 15 year product warranty and a one year parts and labour warranty. For full warranty details visit [www.reece.com.au/warranties](http://www.reece.com.au/warranties)



# FOSTER.

Characteristic of his incomparable style, the Foster Inset Baths offer striking originality and elegant functionality that appears effortless. Clean, simple lines create wonderful shapes and symmetry that delivers visual impact and ultimate comfort in either the **Double Ended** or **Single Ended** interpretations. With a generous length and a gentle slope for support, the Foster offers a luxurious bathing experience. Indeed, the Foster is a special bath for a special bathroom.





## **NORMAN FOSTER**

Sir Norman Foster is one of the world's most respected and awarded architects responsible for many landmark buildings in numerous countries. Foster's design philosophy around individualism, utility and social well being extends into product design and complements perfectly the Hoesch approach. Together, Hoesch and Foster have created truly individual, award winning baths that offer unique, creative expression and inspired comfort.



reddot design award

# HAPPY D.

The Happy D is a classic expression of Dieter Sieger's design approach combining sophisticated details with thoughtful comfort. The rounded corners gives the **Freestanding Back to Wall** bathtub a unique characteristic look while the playful yet considered geometric design creates a distinctive space to create form within the bathroom. Its spacious interior and generous length allows you to admire in comfort, a bath that truly makes a statement.



## DIETER SIEGER

Dieter Sieger is a German architect who enjoyed a successful career in home and interior design before focussing on the design of bathroomware. Over the past two decades Sieger has become one of the most prolific and celebrated designers of bathroom products. Sieger combines an intimate understanding of the bathroom space with a passion for balance and function to consistently produce original designs that work.





# SCELTA.

Characterised by its pure, minimalist design line, the Scelta **Rectangle Inset Bath** can integrate seamlessly into any bathroom setting. Its wide rim is a considered design feature that provides ample space for accessories. The Scelta is made of high-grade sanitary acrylic for a smooth finish and easy care.







# SPECTRA.

The distinctive, gentle curves of the Spectra **Oval Inset Bath** create an immediate impression of design and comfort. The flowing lines continue into the integrated backrest to provide relaxing support. Add to this a generous length and depth and you have an irresistible bathing experience. Available in two sizes for greater flexibility.

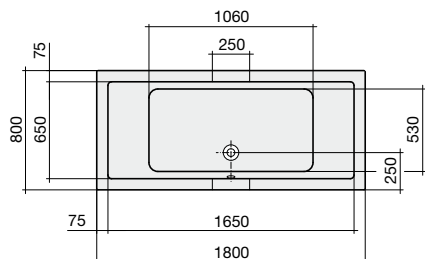


## ADOLF BABEL

Adolf Babel has been one of Hoesch's longest standing and influential designers. His first acrylic baths for Hoesch revolutionised German bathrooms. As a young designer, Babel spent time in Finland where he was lured by its rational, minimalist design and commitment to exceptional quality manufacturing. These remain central characteristics and drivers for his work with Hoesch.

# DIMENSIONS

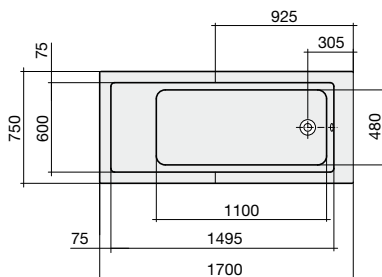
## FOSTER



### DOUBLED ENDED INSET BATH

#### Technical Data

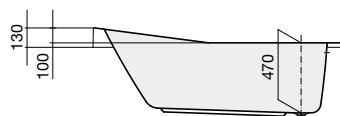
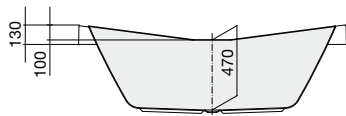
length: 1800mm  
width: 800mm  
internal length: 1650mm  
internal width: 650mm  
base length: 1224mm  
base width: 530mm  
depth: 470mm  
installation height: 620-685mm  
bathtub capacity: 190l  
weight: approx. 24kg



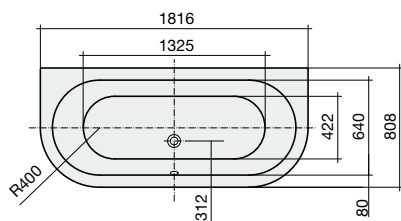
### SINGLE ENDED INSET BATH

#### Technical Data

length: 1700mm  
width: 750mm  
internal length: 1495mm  
internal width: 600mm  
base length: 1100mm  
base width: 480mm  
depth: 470mm  
installation height: 620-685mm  
bathtub capacity: 175l  
weight: approx. 22kg

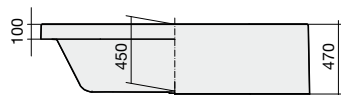


## HAPPY D



#### Technical Data

length: 1816mm  
width: 808mm  
internal width: 640mm  
base length: 1325mm  
base width: 422mm  
depth: 450mm  
installation height: 600-665mm  
bathtub capacity: 140l  
weight: approx. 28kg



### iF PRODUCT DESIGN AWARD

The iF Product Design Award was introduced in 1954 and is annually conferred by the iF International Design Forum who recognise outstanding design quality. It is one of the most important international product design awards and covers all areas of product design.



red dot design award

### REDOT DESIGN AWARD

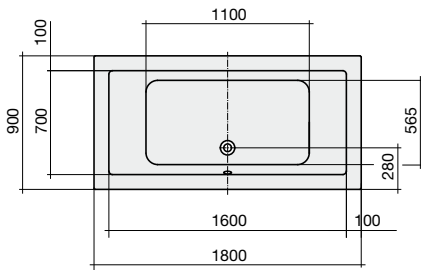
The international "red dot design award" is the largest and most renowned design competition in the world recognising outstanding product design. It is awarded by the Design Zentrum Nordrhein Westfalen in Essen, Germany.



### GOOD DESIGN AWARD

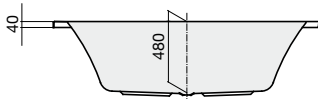
Good Design is one of the world's oldest and most prestigious award programs conferred by The Chicago Athenaeum: Museum of Architecture and Design. Good Design recognises international designers and manufacturers for advancing new and innovative product thinking and originality.

# SCELTA

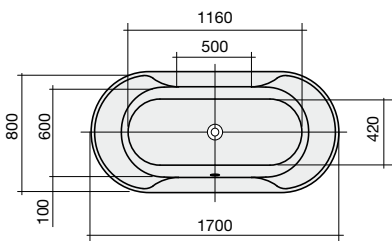


## Technical Data

length: 1800mm  
width: 900mm  
internal length: 1600mm  
internal width: 700mm  
base length: 1100mm  
base width: 565mm  
depth: 480mm  
installation height: 630-695mm  
bathtub capacity: 225l  
weight: approx. 27kg



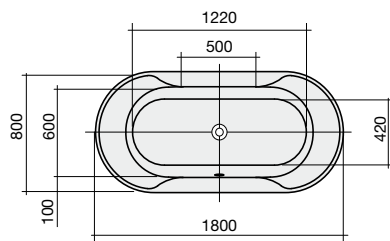
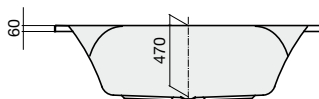
# SPECTRA



## OVAL INSET BATH (1700X800)

### Technical Data

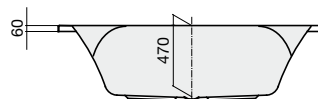
length: 1700mm  
width: 800mm  
internal width: 600mm  
base length: 1160mm  
base width: 420mm  
depth: 470mm  
installation height: 620-685mm  
bathtub capacity: 150 l  
weight: approx. 20kg



## OVAL INSET BATH (1800x800)

### Technical Data

length: 1800mm  
width: 800mm  
internal width: 600mm  
base length: 1220mm  
base width: 420mm  
depth: 470mm  
installation height: 620-685mm  
bathtub capacity: 170 l  
weight: approx. 21kg



## *Bathroom Happiness™*

Visit any one of our 300 showrooms around Australia for all the latest products, concepts and inspiration to make your bathroom whatever you want it to be. And for the ultimate bathroom experience, go to one of our bathroom life™ stores where you will find the biggest range of leading Australian and international brands.

Call **1800 032 566** or visit **[www.reece.com.au](http://www.reece.com.au)** for your nearest bathroom showroom.

Due to limitations in the printing process the colours in this brochure are a guide only. The manufacturer/distributor reserves the right to vary specifications or delete models from their range without prior notification. The manufacturer/distributor takes no responsibility for printing errors. Hoesch showers enjoy a 15 year product warranty and a one year parts and labour warranty - domestic use only. Tapware not available in Australia. See [www.reece.com.au/warranties](http://www.reece.com.au/warranties) for more information.

